

CVD Risk Charts for patient communication

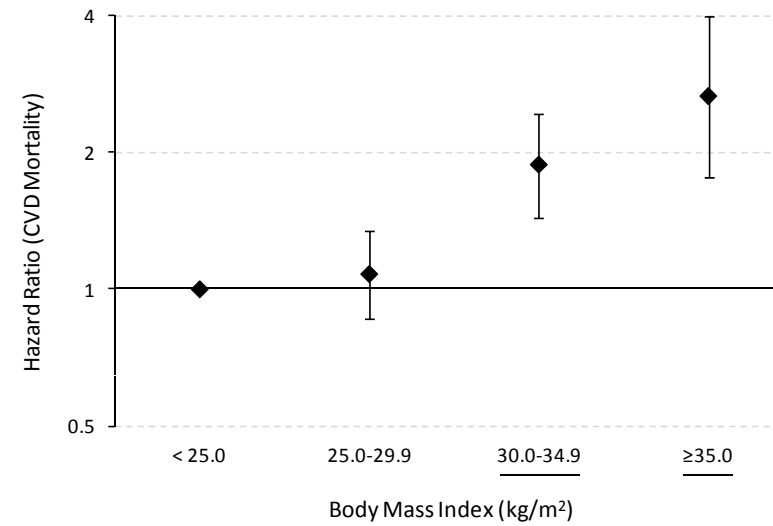
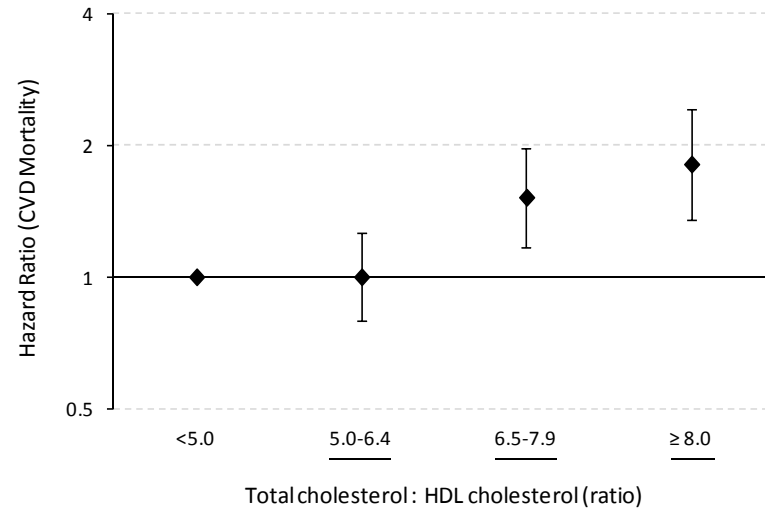
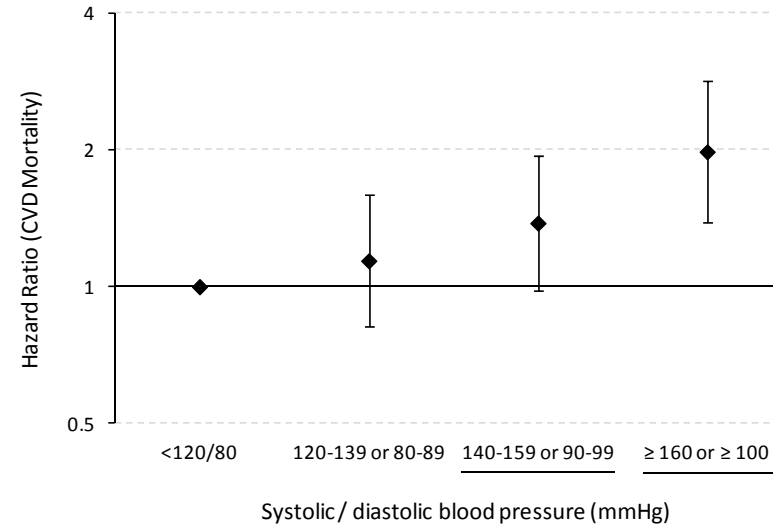
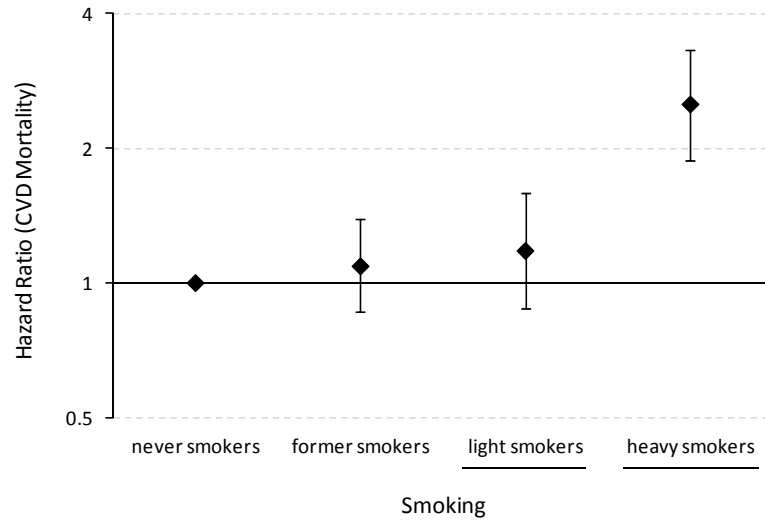
David Fäh

Institut für Sozial- und
Präventivmedizin



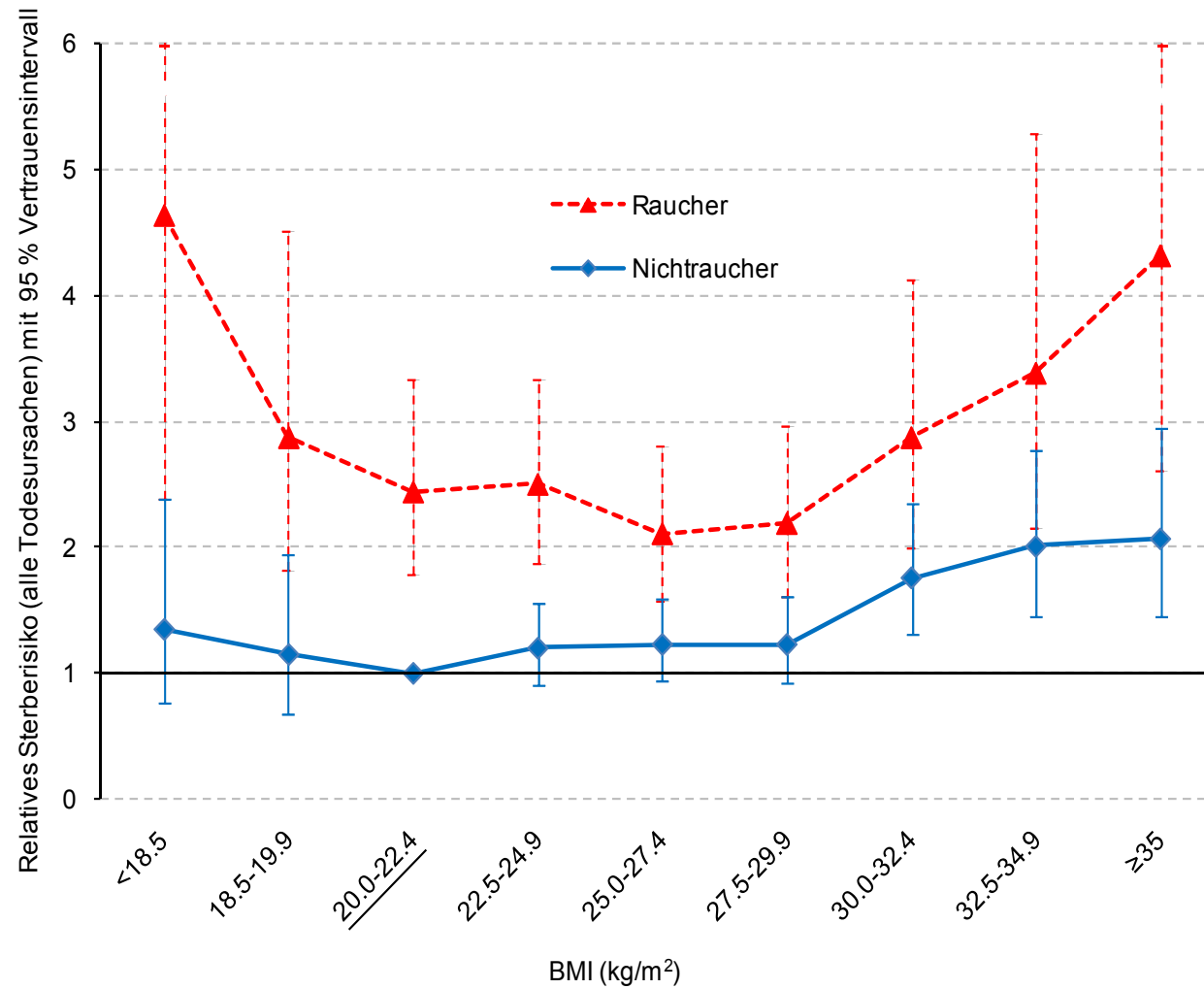
Universität
Zürich^{UZH}

Study	Assessment	Follow-up (years)	Participants (n)	Deaths all (n)	Deaths, CVD	Deaths, Cancer	Deaths, Respiratory	Deaths other
NRP 1A	Measurement	32	8008	2427	937	738	125	627
MONICA	Measurement	26	9853	1526	448	636	84	358
Total Measurement			17861	3953	1385	1374	209	985
SOMIPOPS	Self-report	27	4255	1240	520	354	94	272
SHS 92/93	Self-report	16	15288	2394	914	728	160	592
Total Self-report			19543	3634	1434	1082	254	864
Total overall			37404	7587	2819	2456	463	1849



Faeh, Eur J Cardiovasc Prev Rehabil. 2011 Nov 11.

David Faeh: CVD Risk Charts for patient communication, 17.5.2013



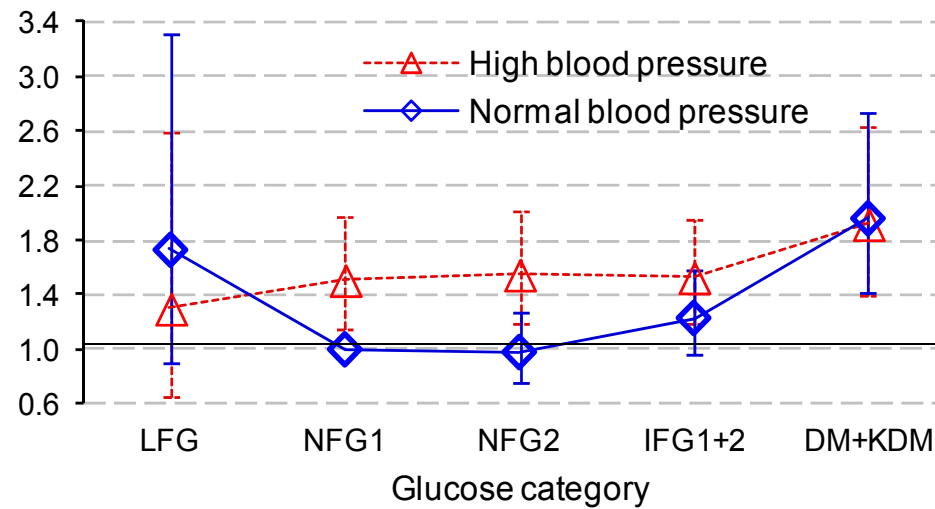
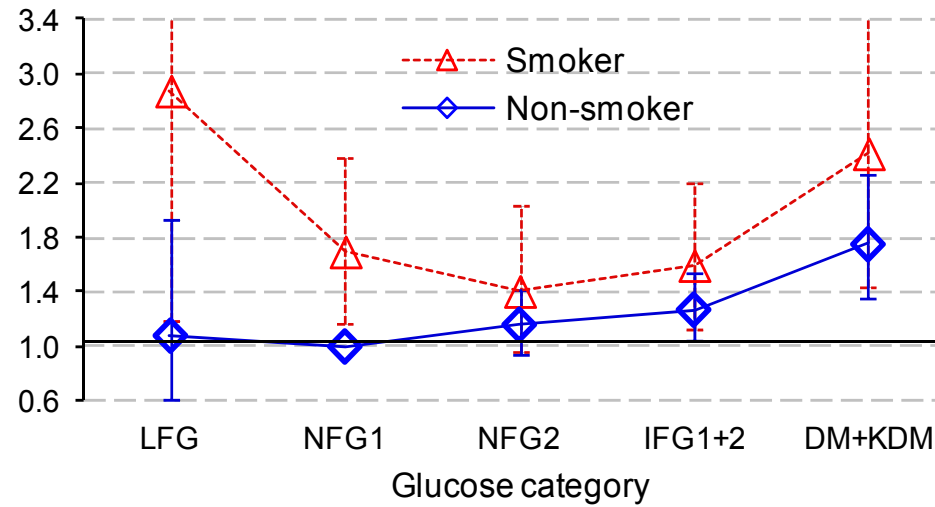
Faeh, et al, Eur J Epidemiol. 2011 Aug;26(8):647-55

David Faeh: CVD Risk Charts for patient communication, 17.5.2013

Institut für Sozial- und Präventivmedizin

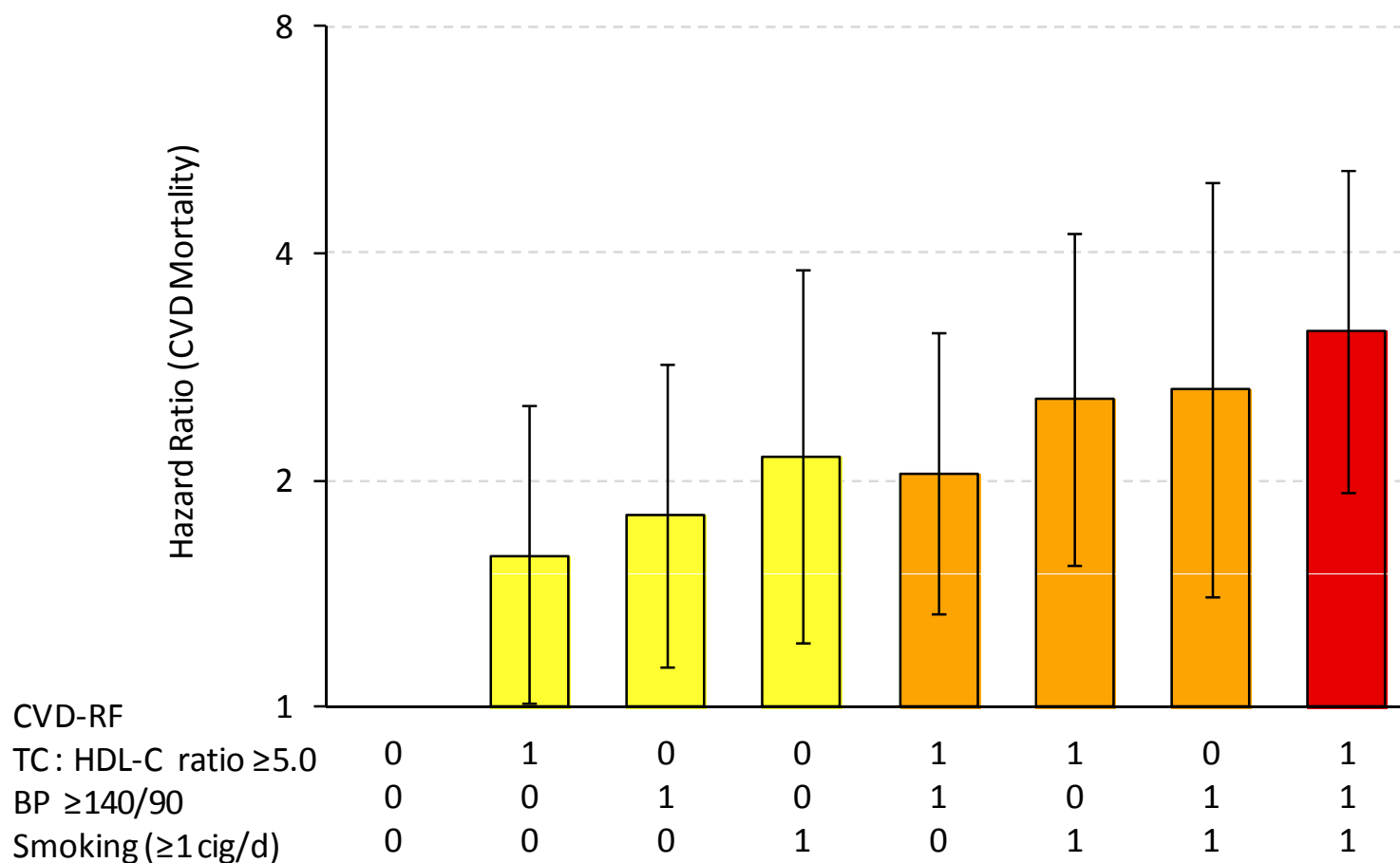


Universität Zürich^{UZH}



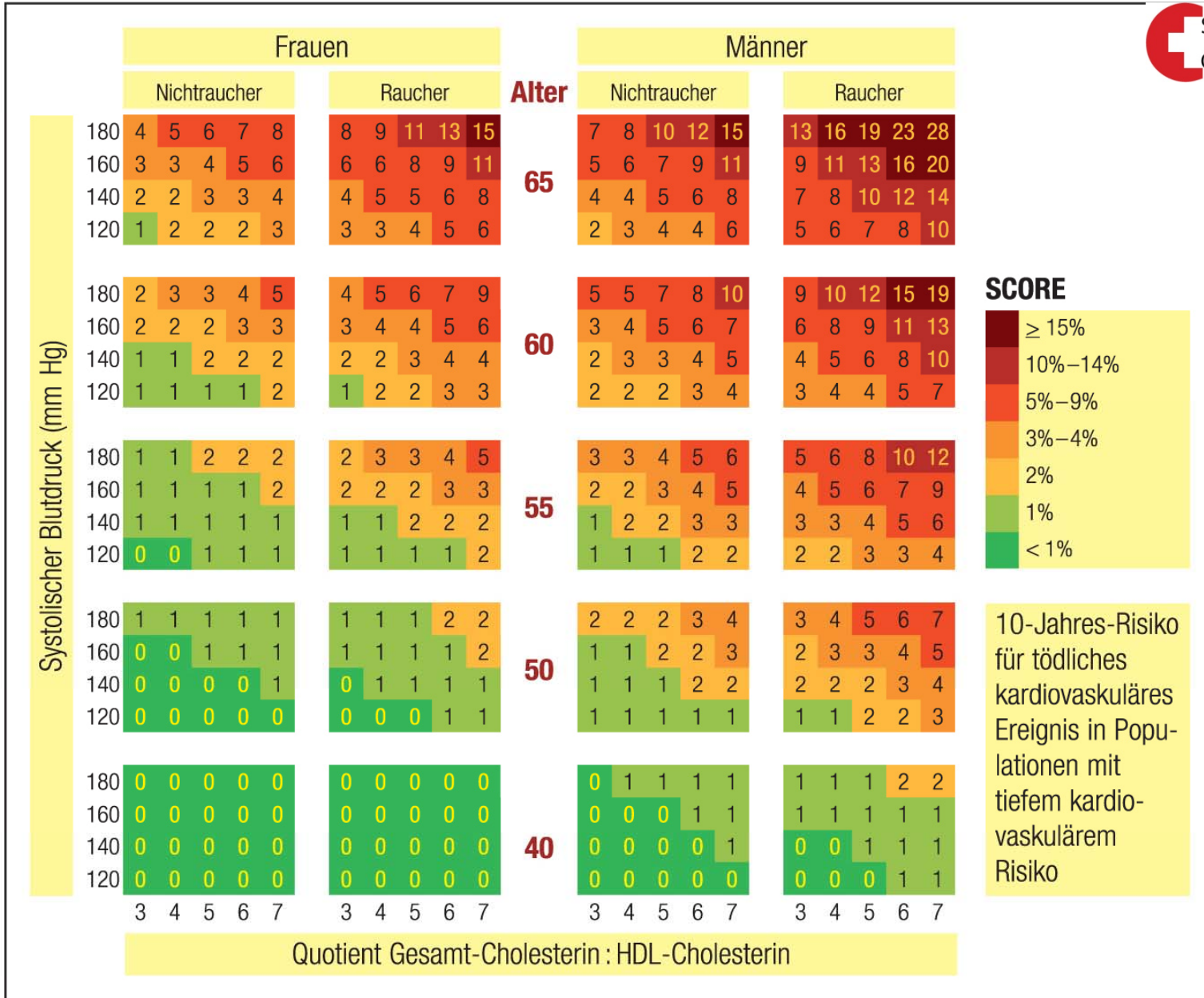
Von Gunten et al, submitted

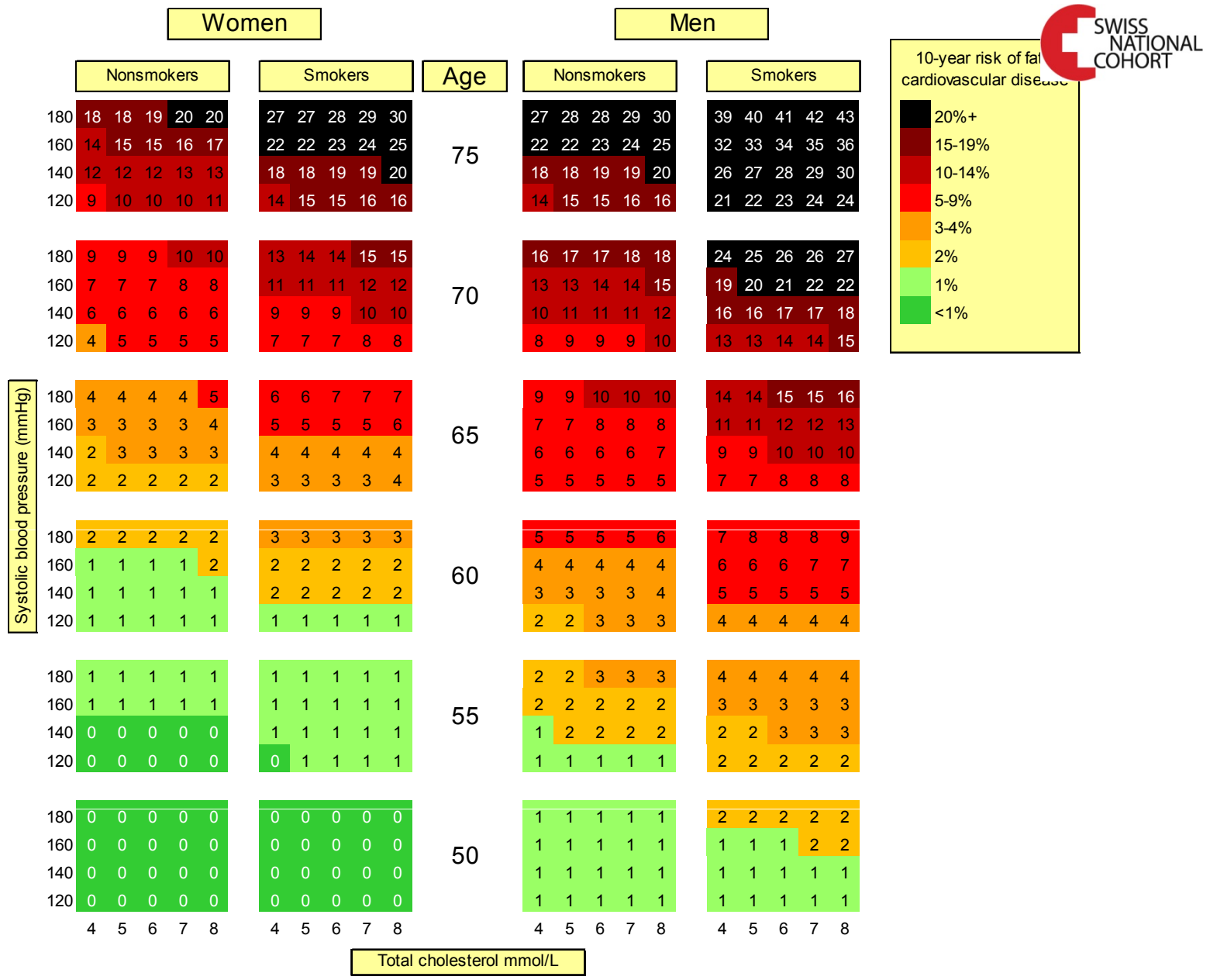
David Faeh: CVD Risk Charts for patient communication, 17.5.2013



Faeh, Eur J Cardiovasc Prev Rehabil. 2011 Nov 11.

David Faeh: CVD Risk Charts for patient communication, 17.5.2013





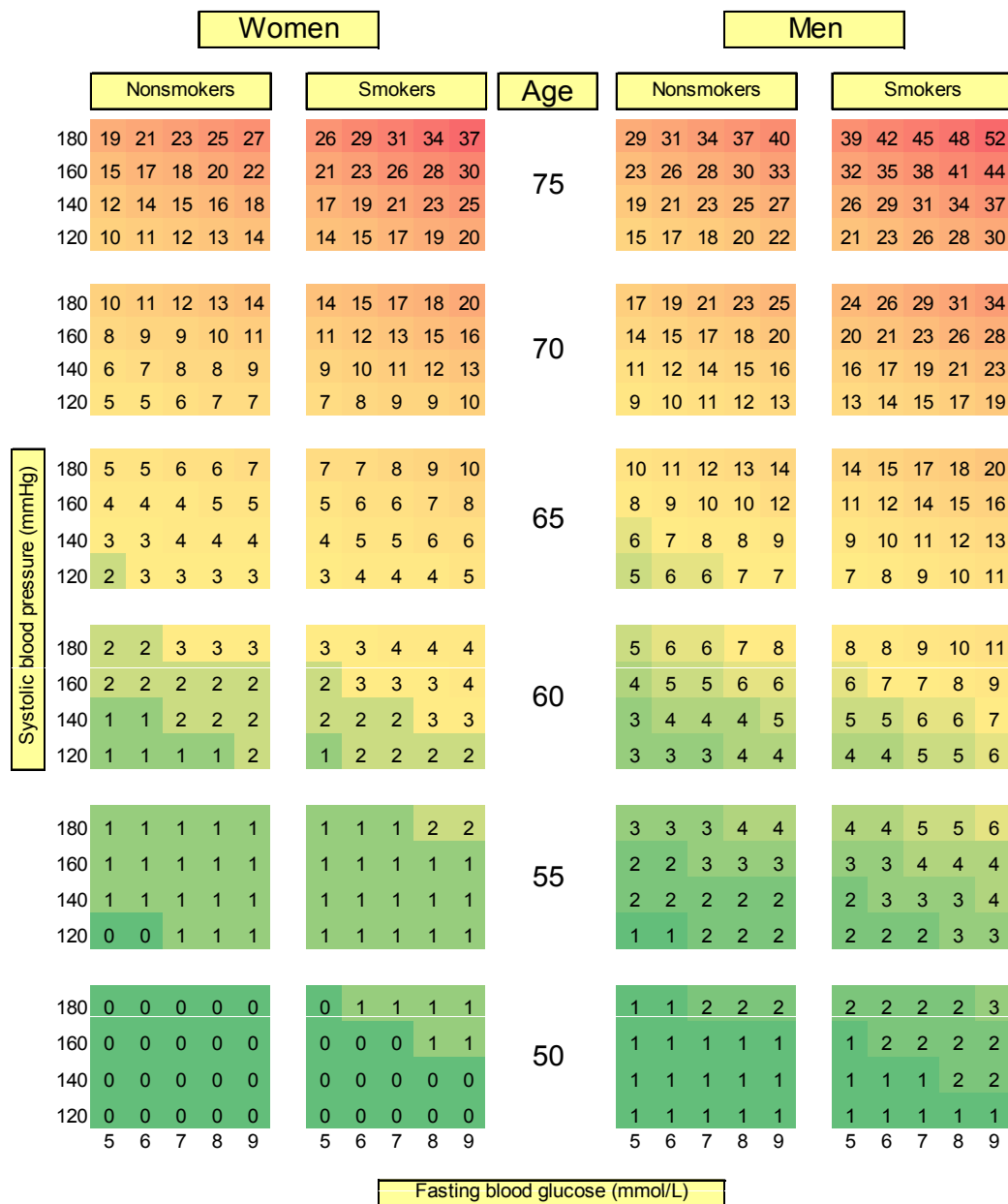
Faeh et al, PLoS One. 2013;8(2):e56149

David Faeh: CVD Risk Charts for patient communication, 17.5.2013

Institut für Sozial- und Präventivmedizin



Universität Zürich UZH



Fasting blood glucose (mmol/L)

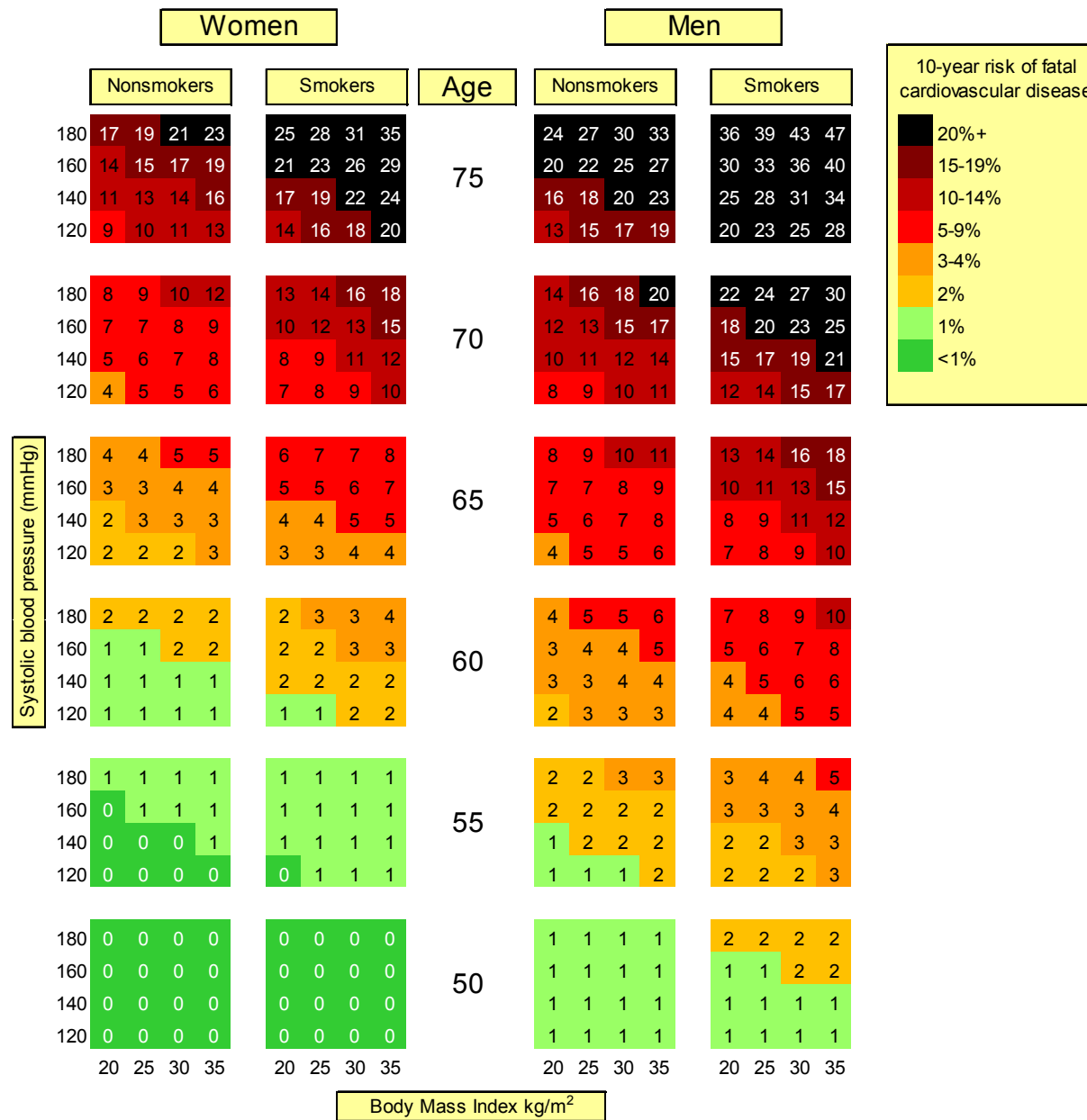
doi: 10.1186/1475-2840-12-24.

David Faeh: CVD Risk Charts for patient communication, 17.5.2013

Institut für Sozial- und Präventivmedizin



Universität Zürich UZH

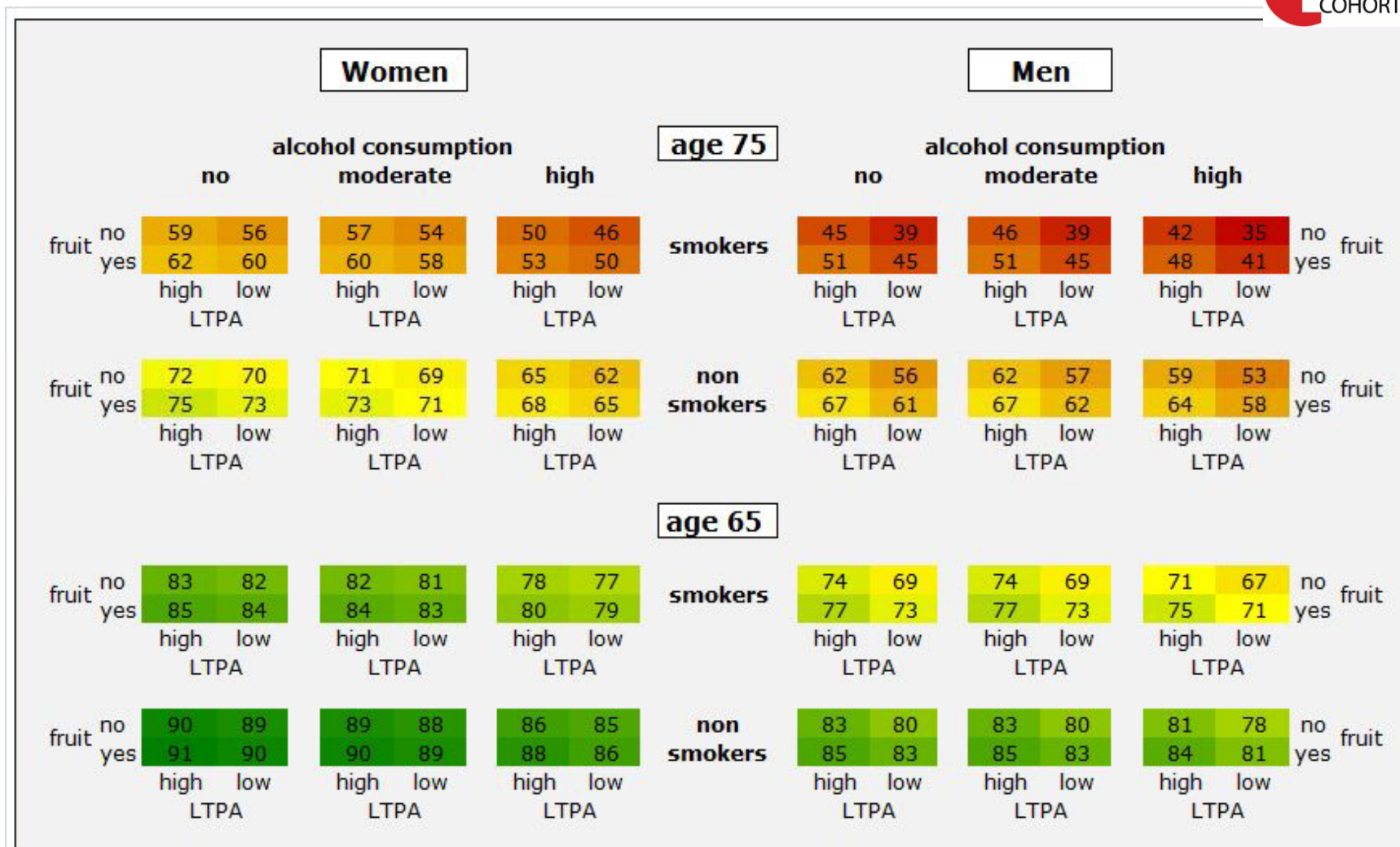


Faeh et al, Arch Intern Med. 2012 Dec 10;172(22):1766-8
 David Faeh: CVD Risk Charts for patient communication, 17.5.2013

Institut für Sozial- und
 Präventivmedizin

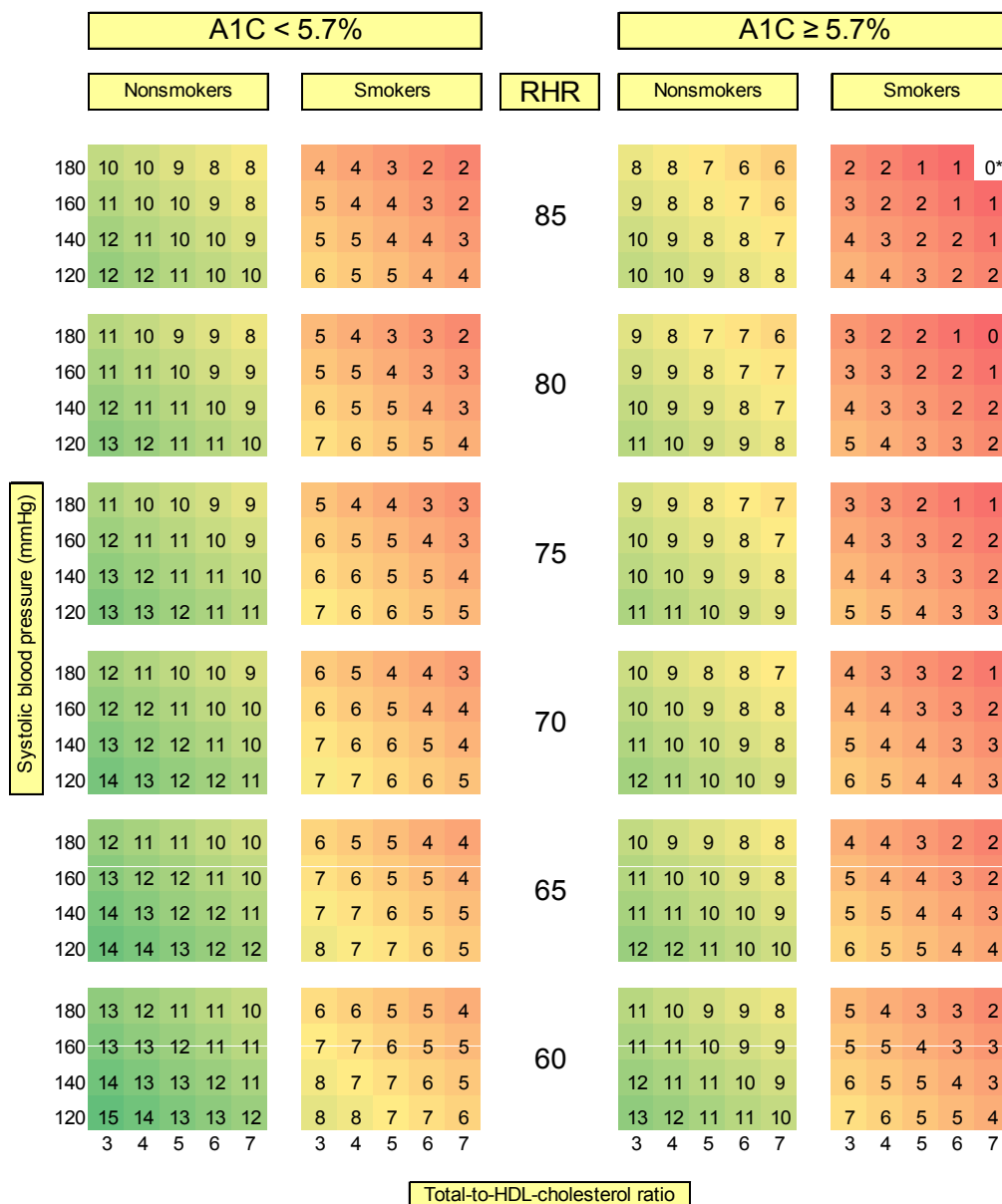


Universität
 Zürich^{UZH}



Eva Martin et al, submitted

David Faeh: CVD Risk Charts for patient communication, 17.5.2013



*Compared to the least favourable risk factors combination (0 Life-Years-Gained)
RHR: resting heart rate

Thanks!